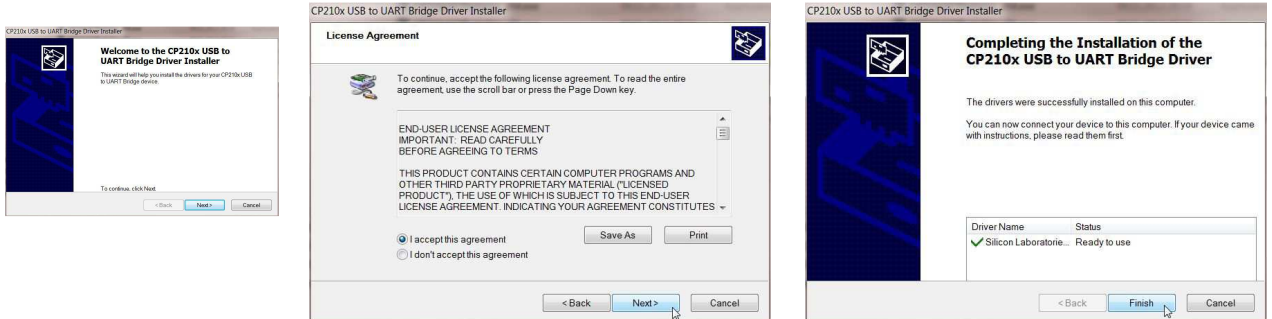
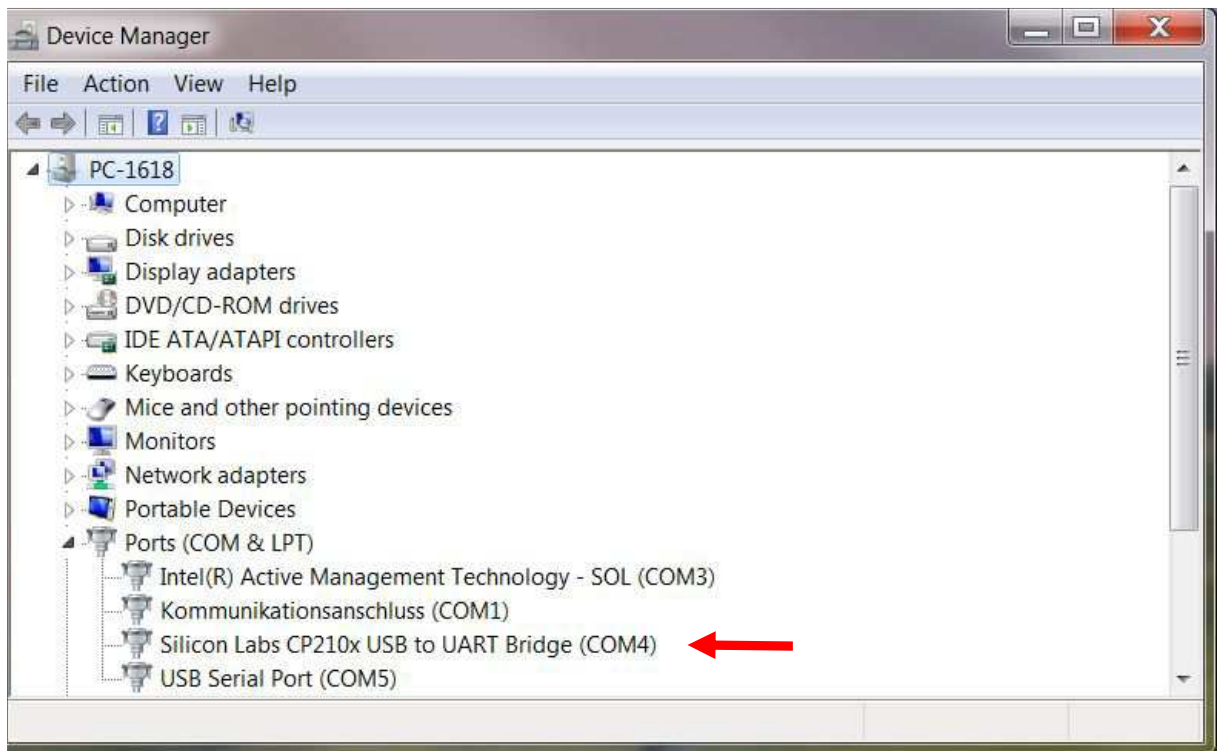


USB Driver Installation für KETTLER devices with USB connection XP / Vista / 7 / 8 (32/64 bit)

1. Do **not** connect your device to the PC!
2. Double-click the file CP210xVCPInstaller_x64.exe if you installed a 64 bit Windows version or the CP210xVCPInstaller_x86.exe if you have a 32-bit Windows version.
3. A welcome screen appears. Click on the button "Next".
4. Accept the licence agreement and click on the button "Next".
5. Click on the button "Finish".



6. Switch on your KETTLER device.
7. Connect your PC/Notebook to your device.
After that the device manager shows the new entry:
Silicon Labs CP210x USB to UART Bridge



The drivers could be deleted with "Change or Remove Programs" under Settings > Control > Panel > Add/Remove Programs.

Windows Driver Package - Silicon Laboratories (silabnm) Ports (12/10/2012 6.6.1.0)	Silicon Laboratories	09.01.2013		12/10/2012 6.6.1.0
Windows Live Essentials 2011	Microsoft Corporation	17.06.2011		15.4.3508.1109
Windows Live Mesh ActiveX control for remote connections	Microsoft Corporation	17.06.2011	5,57 MB	15.4.5722.2
WinRAR 4.01 (64-Bit)	win.rar GmbH	06.07.2011		4.01.0
Silicon Laboratories Produktversion: 12/10/2012 6.6.1.0				